

ShermanEng.Com

VersionWorks® is an enterprise industrial automation software source configuration management solution, providing a comprehensive suite of tools to protect, save, restore, discover, and track changes for industrial programmable devices and documents.

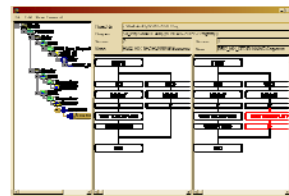
Central Configuration Repository

Centrally manage programmable device program and documentation changes made by multiple users from multiple locations.

VersionWorks® increases productivity and reduces errors by providing a common central clearinghouse of all changes enhancing collaboration.



- ✚ Work Flow Approval / Electronic Signatures
- ✚ Historical Tracking / Ancestor Archives
- ✚ On Demand Compare / Scheduled Compare
- ✚ Enhanced Active Directory Security
- ✚ Automatic Alerts / Reporting
- ✚ Discovery Tools / Libraries



- **Improve Plant Safety** - Reduce Incident Reports from Configuration Issues
- **Increase Plant Reliability** - Reduce Quality & Equipment Malfunction Issues
- **Enhance collaboration** - Reduce Versioning Research & Training

- ✓ Where is the latest program?
- ✓ What exactly has been changed and why?
- ✓ Why have the others not been informed?
- ✓ What software version is our system really using at present?

Data Models

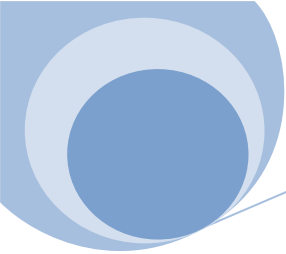
<u>PLC</u>	<u>HMI-SCADA</u>	<u>ROBOTS</u>
SIMATIC S5 6.x - 7.x	InTouch 6.0 - 9.x	ABB
SIMATIC S7 5.0 - 5.x	WinCC 5.x - 6.x	KUKA
Rockwell RSLogix 5 V7.x	CitectSCADA 5.x	ADEPT V+
Rockwell RSLogix 5000 V13.x	Intellution iFix 3.x*	MotoMan

Acquire

Sherman & Associates, Inc. provides complete software development lifecycle services, as well as care for systems after implementation. **VersionWorks®** ensures quality assurance, documentation and support, both during and after installations.



VersionWork.Com



ShermanEng.Com

Sherman & Associates, Inc. (ShermanEng.com) provides consulting, design, and implementation of factory automation and data interface systems. We are familiar with the standard control system models as well as the new avenues of data access (OPC) that the current technologies have provided. The edge we provide is the power of Networking, SQL Databases, and languages such as C++, .NET, ASP, and office integration tools. You will find our organization to be flexible and responsive.



Allen-Bradley



- Industrial Information and Automation Solutions
- Custom Data Collection Solutions
- Human Machine Interface (HMI) Design
- Programmable Logic Controller (PLC) Design
- OPC Solutions (See Products - .NET OPC Loggers & Clients)

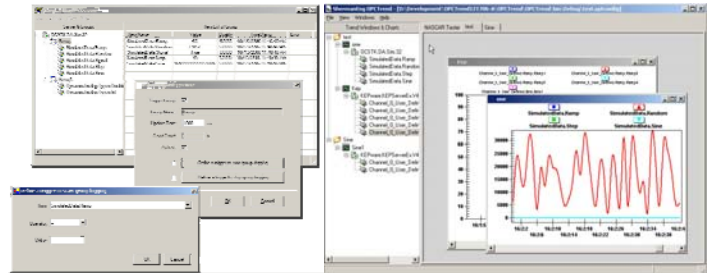


Our OPC Products

Our OPC tools are the basic infrastructure required to communicate and generate any kind of data from industrial control system devices. The applications are completely user configurable to generate almost any kind of data storage and reporting system. All tools are available in open source format. The Standard templates are the **Data Historian and Data Trending Clients**.

Features:

- Runs as Service with Separate Configuration Client
- Dynamically Creates/Changes Database Schema
- Control Logging from system events
- Log on Change, Rate with Dead band



Our Data Integrated Products

Complimenting the OPC communication products is our Web Based Database applications. These applications can acquire data collected from plant equipment via OPC and utilize it dynamically in our applications. Our most popular ...

PTMS - Plant Terminal Management Site

Web Based ASP.NET Application Providing Shipping, Receiving, Liquid Inventory, Scheduling, and Production Reporting Capabilities. Tank Inventory and Production Reporting can be custom solution tied directly to the live data or manually entered via Web Interface.

HAZMATS – Waste Manifest Tracking Application Site

Web Based ASP.NET Application Providing Generator Waste Stream tracking, Haz and Non-Haz Waste Manifests, Scheduling, and EPA/TCEQ Reporting Capabilities. Logistics Module allows integration with fleet software or internet truck stops. Supports 2007 Universal Waste Manifest forms and Labels.

Real Data
Anytime Anywhere



VersionWork.Com

15823 Maple Manor Houston, TX 77095 / 4445 NASA Pkwy Seabrook, TX 77586 * 281-326-0782